



License No. 800025015  
FL License # CMTL-0003  
CLIA No. 10D1094068

# Certificate of Analysis

## Compliance Test

**Heaven Sent Hemp**  
PO Box 555  
Lobelville, TN 37097

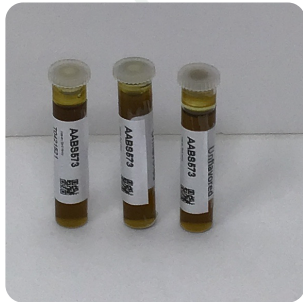
Batch # T0421521  
Batch Date: 2021-08-03  
Extracted From: Hemp

Test Reg State: Florida

Order # HEA210804-040005  
Order Date: 2021-08-04  
Sample # AABS573

Sampling Date: 2021-08-06  
Lab Batch Date: 2021-08-06  
Completion Date: 2021-08-11

Initial Gross Weight: 15.410 g



Product Image

Potency  
Tested

Terpenes  
Tested

Heavy Metals  
Passed

Mycotoxins  
Passed

Pesticides  
Passed

Residual  
Solvents  
Passed

Listeria  
Monocytogenes  
Passed

### Potency - 11

Specimen Weight: 108.290 mg

Analyte	Dilution (1:n)	LOD (%)	LOQ (%)	Result (mg/g)	(%)
CBD	10.000	0.000054	0.001	16.970	1.697
CBDA	10.000	0.00001	0.001	4.112	0.411
Delta-9 THC	10.000	0.000013	0.001	1.289	0.129
CBC	10.000	0.000018	0.001	0.709	0.071
CBG	10.000	0.000248	0.001	0.463	0.046
CBN	10.000	0.000014	0.001	0.179	0.018
CBGA	10.000	0.00008	0.001	0.173	0.017
THCV	10.000	0.000007	0.001	<LOQ	
Delta-8 THC	10.000	0.000026	0.001	<LOQ	
CBDV	10.000	0.000065	0.001	<LOQ	
THCA-A	10.000	0.000032	0.001	<LOQ	

### Tested (HPLC/LCMS)

### Potency Summary

Total THC 0.129%	Total CBD 2.058%
Total CBG 0.061%	Total CBN 0.018%
Other Cannabinoids 0.071%	Total Cannabinoids 2.337%

### Terpenes Summary

Analyte	Result (mg/g)	(%)
trans-Caryophyllene	0.557	0.056%
Farnesene	0.431	0.043%
alpha-Bisabolol	0.225	0.023%
Guaiol	0.205	0.02%

Total Terpenes: 0.142%

Detailed Terpenes Analysis is on the following page

Xueli Gao  
Ph.D., DABT  
Lab Toxicologist

Aixia Sun  
D.H.Sc., M.Sc., B.Sc., MT (AAB)  
Lab Director/Principal Scientist



Definitions and Abbreviations used in this report: \*Total CBD = CBD + (CBD-A \* 0.877), \*Total THC = THCA-A \* 0.877 + Delta 9 THC, \*CBG Total = (CBGA \* 0.877) + CBG, \*CBN Total = (CBNA \* 0.877) + CBN, \*Other Cannabinoids Total = CBC + CBDV + THCV + THCV-A, \*Total Detected Cannabinoids = CBD Total + CBG Total + CBN Total + THC Total + CBC + CBDV + THCV + THCV-A, \*Analyte Details above show the Dry Weight Concentrations unless specified as 12% moisture concentration. (mg/ml) = Milligrams per Milliliter, LOQ = Limit of Quantitation, LOD = Limit of Detection, Dilution = Dilution Factor (ppb) = Parts per Billion, (%) = Percent, (cfu/g) = Colony Forming Unit per Gram (cfu/g) = Colony Forming Unit per Gram, , LOD = Limit of Detection, (µg/g) = Microgram per Gram (ppm) = Parts per Million, (ppm) = (µg/g), (aw) = aw (area ratio) = Area Ratio, (mg/Kg) = Milligram per Kilogram, \*Measurement of Uncertainty = +/- 5%

This report shall not be reproduced, without written approval, from ACS Laboratory. The results of this report relate only to the material or product analyzed. Test results are confidential unless explicitly waived otherwise. Accredited by a third-party accrediting body as a competent testing laboratory pursuant to ISO/IEC 17025 of the International Organization for Standardization.





License No. 800025015  
FL License # CMTL-0003  
CLIA No. 10D1094068

# Certificate of Analysis

Compliance Test

**Heaven Sent Hemp**  
PO Box 555  
Lobelville, TN 37097

Batch # T0421521  
Batch Date: 2021-08-03  
Extracted From: Hemp

Test Reg State: Florida

Order # HEA210804-040005  
Order Date: 2021-08-04  
Sample # AABS573

Sampling Date: 2021-08-06  
Lab Batch Date: 2021-08-06  
Completion Date: 2021-08-11

Initial Gross Weight: 15.410 g



## Terpenes - FL

Specimen Weight: 108.290 mg

Tested  
(GC/GCMS)

Dilution Factor: 20.000

Analyte	LOQ (%)	Result (mg/g)	(%)	Analyte	LOQ (%)	Result (mg/g)	(%)
trans-Caryophyllene	0.02	0.557	0.056	Farnesene	0.02	0.431	0.043
alpha-Bisabolol	0.02	0.225	0.023	Guaiaol	0.02	0.205	0.020
Ocimene	0.014	<LOQ		Geranyl acetate	0.02	<LOQ	
Hexahydrothymol	0.02	<LOQ		Isoborneol	0.02	<LOQ	
Isopulegol	0.02	<LOQ		Linalool	0.02	<LOQ	
Nerol	0.02	<LOQ		(+)-Cedrol	0.02	<LOQ	
Pulegone	0.02	<LOQ		Sabinene	0.02	<LOQ	
Sabinene Hydrate	0.02	<LOQ		Terpinolene	0.02	<LOQ	
Total Terpeneol	0.02	<LOQ		trans-Nerolidol	0.02	<LOQ	
Geraniol	0.02	<LOQ		Fenchone	0.02	<LOQ	
Gamma-Terpinene	0.02	<LOQ		beta-Myrcene	0.02	<LOQ	
3-Carene	0.02	<LOQ		alpha-Cedrene	0.02	<LOQ	
alpha-Humulene	0.02	<LOQ		alpha-Phellandrene	0.02	<LOQ	
alpha-Pinene	0.02	<LOQ		alpha-Terpinene	0.02	<LOQ	
beta-Pinene	0.02	<LOQ		Fenchyl Alcohol	0.02	<LOQ	
Borneol	0.04	<LOQ		Camphene	0.02	<LOQ	
Camphors	0.04	<LOQ		Caryophyllene oxide	0.02	<LOQ	
cis-Nerolidol	0.02	<LOQ		Eucalyptol	0.02	<LOQ	
(R)-(+)-Limonene	0.02	<LOQ		Valencene	0.02	<LOQ	

Total Terpenes: 0.142%

*Xueli Gao*  
Xueli Gao Lab Toxicologist  
Ph.D., DABT

*Aixia Sun*  
Aixia Sun Lab Director/Principal Scientist  
D.H.Sc., M.Sc., B.Sc., MT (AAB)



Definitions and Abbreviations used in this report: \*Total CBD = CBD + (CBD-A \* 0.877), \*Total THC = THCA-A \* 0.877 + Delta 9 THC, \*CBG Total = (CBGA \* 0.877) + CBG, \*CBN Total = (CBNA \* 0.877) + CBN, \*Other Cannabinoids Total = CBC + CBDV + THCV + THCV-A, \*Total Detected Cannabinoids = CBD Total + CBG Total + CBN Total + THC Total + CBC + CBDV + THCV + THCV-A, \*Analyte Details above show the Dry Weight Concentrations unless specified as 12% moisture concentration. (mg/ml) = Milligrams per Milliliter, LOQ = Limit of Quantitation, LOD = Limit of Detection, Dilution = Dilution Factor (ppb) = Parts per Billion, (%) = Percent, (cfu/g) = Colony Forming Unit per Gram (cfu/g) = Colony Forming Unit per Gram, , LOD = Limit of Detection, (µg/g) = Microgram per Gram (ppm) = Parts per Million, (ppm) = (µg/g), (aw) = aw (area ratio) = Area Ratio, (mg/Kg) = Milligram per Kilogram, \*Measurement of Uncertainty = +/- 5%



This report shall not be reproduced, without written approval, from ACS Laboratory. The results of this report relate only to the material or product analyzed. Test results are confidential unless explicitly waived otherwise. Accredited by a third-party accrediting body as a competent testing laboratory pursuant to ISO/IEC 17025 of the International Organization for Standardization.



License No. 800025015  
FL License # CMTL-0003  
CLIA No. 10D1094068

# Certificate of Analysis

Compliance Test

**Heaven Sent Hemp**  
PO Box 555  
Lobelville, TN 37097

Batch # T0421521  
Batch Date: 2021-08-03  
Extracted From: Hemp

Test Reg State: Florida

Order # HEA210804-040005  
Order Date: 2021-08-04  
Sample # AABS573

Sampling Date: 2021-08-06  
Lab Batch Date: 2021-08-06  
Completion Date: 2021-08-11

Initial Gross Weight: 15.410 g

## H Heavy Metals Passed (ICP-MS)

Specimen Weight: 253.500 mg

Dilution Factor: 2.000

Analyte	LOQ (ppb)	Action Level (ppb)	Result (ppb)	Analyte	LOQ (ppb)	Action Level (ppb)	Result (ppb)
Arsenic (As)	100	1500	<LOQ	Cadmium (Cd)	100	500	<LOQ
Lead (Pb)	100	500	<LOQ	Mercury (Hg)	100	3000	<LOQ

## Mycotoxins Passed (LCMS)

Specimen Weight: 183.600 mg

Dilution Factor: 8.170

Analyte	LOQ (ppb)	Action Level (ppb)	Result (ppb)	Analyte	LOQ (ppb)	Action Level (ppb)	Result (ppb)
Aflatoxin B1	6	20	<LOQ	Aflatoxin B2	6	20	<LOQ
Aflatoxin G1	6	20	<LOQ	Aflatoxin G2	6	20	<LOQ
Ochratoxin A	12	20	<LOQ				

*Xueli Gao*  
Xueli Gao  
Lab Toxicologist  
Ph.D., DABT

*Aixia Sun*  
Aixia Sun  
Lab Director/Principal Scientist  
D.H.Sc., M.Sc., B.Sc., MT (AAB)



Definitions and Abbreviations used in this report: \*Total CBD = CBD + (CBD-A \* 0.877), \*Total THC = THCA-A \* 0.877 + Delta 9 THC, \*CBG Total = (CBGA \* 0.877) + CBG, \*CBN Total = (CBNA \* 0.877) + CBN, \*Other Cannabinoids Total = CBC + CBDV + THCV + THCV-A, \*Total Detected Cannabinoids = CBD Total + CBG Total + CBN Total + THC Total + CBC + CBDV + THCV + THCV-A, \*Analyte Details above show the Dry Weight Concentrations unless specified as 12% moisture concentration. (mg/ml) = Milligrams per Milliliter, LOQ = Limit of Quantitation, LOD = Limit of Detection, Dilution = Dilution Factor (ppb) = Parts per Billion, (%) = Percent, (cfu/g) = Colony Forming Unit per Gram (cfu/g) = Colony Forming Unit per Gram, , LOD = Limit of Detection, (µg/g) = Microgram per Gram (ppm) = Parts per Million, (ppm) = (µg/g), (aw) = aw (area ratio) = Area Ratio, (mg/Kg) = Milligram per Kilogram, \*Measurement of Uncertainty = +/- 5%



This report shall not be reproduced, without written approval, from ACS Laboratory. The results of this report relate only to the material or product analyzed. Test results are confidential unless explicitly waived otherwise. Accredited by a third-party accrediting body as a competent testing laboratory pursuant to ISO/IEC 17025 of the International Organization for Standardization.



License No. 800025015  
FL License # CMTL-0003  
CLIA No. 10D1094068

# Certificate of Analysis

Compliance Test

**Heaven Sent Hemp**  
PO Box 555  
Lobelville, TN 37097

Batch # T0421521  
Batch Date: 2021-08-03  
Extracted From: Hemp

Test Reg State: Florida

Order # HEA210804-040005  
Order Date: 2021-08-04  
Sample # AABS573

Sampling Date: 2021-08-06  
Lab Batch Date: 2021-08-06  
Completion Date: 2021-08-11

Initial Gross Weight: 15.410 g



## Pesticides FL V4

Specimen Weight: 183.600 mg

**Passed**  
(LCMS/GCMS)

Dilution Factor: 8.170

Analyte	LOQ (ppb)	Action Level (ppb)	Result (ppb)	Analyte	LOQ (ppb)	Action Level (ppb)	Result (ppb)
Abamectin	28.23	300	<LOQ	Acephate	30	3000	<LOQ
Acequinocyl	48	2000	<LOQ	Acetamiprid	30	3000	<LOQ
Aldicarb	30	100	<LOQ	Azoxystrobin	10	3000	<LOQ
Bifenazate	30	3000	<LOQ	Bifenthrin	30	500	<LOQ
Boscalid	10	3000	<LOQ	Captan	30	3000	<LOQ
Carbaryl	10	500	<LOQ	Carbofuran	10	100	<LOQ
Chlorantraniliprole	10	3000	<LOQ	Chlordane	10	100	<LOQ
Chlorfenapyr	30	100	<LOQ	Chlormequat Chloride	10	3000	<LOQ
Chlorpyrifos	30	100	<LOQ	Clofentazine	30	500	<LOQ
Coumaphos	48	100	<LOQ	Cyfluthrin	30	1000	<LOQ
Cypermethrin	30	1000	<LOQ	Daminozide	30	100	<LOQ
Diazinon	30	200	<LOQ	Dichlorvos	30	100	<LOQ
Dimethoate	30	100	<LOQ	Dimethomorph	48	3000	<LOQ
Ethoprophos	30	100	<LOQ	Etofenprox	30	100	<LOQ
Etozoxole	30	1500	<LOQ	Fenhexamid	10	3000	<LOQ
Fenoxycarb	30	100	<LOQ	Fenpyroximate	30	2000	<LOQ
Fipronil	30	100	<LOQ	Fonicamid	30	2000	<LOQ
Fludioxonil	48	3000	<LOQ	Hexythiazox	30	2000	<LOQ
Imazalil	30	100	<LOQ	Imidacloprid	30	3000	<LOQ
Kresoxim Methyl	30	1000	<LOQ	Malathion	30	2000	<LOQ
Metaxyl	10	3000	<LOQ	Methiocarb	30	100	<LOQ
Methomyl	30	100	<LOQ	methyl-Parathion	10	100	<LOQ
Mevinphos	10	100	<LOQ	Myclobutanil	30	3000	<LOQ
Naled	30	500	<LOQ	Oxamyl	30	500	<LOQ
Paclotrazol	30	100	<LOQ	Pentachloronitrobenzene	10	200	<LOQ
Permethrin	30	1000	<LOQ	Phosmet	30	200	<LOQ
Piperonylbutoxide	30	3000	<LOQ	Prallethrin	30	400	<LOQ
Propiconazole	30	1000	<LOQ	Propoxur	30	100	<LOQ
Pyrethrins	30	1000	<LOQ	Pyridaben	30	3000	<LOQ
Spinetoram	10	3000	<LOQ	Spinosad	30	3000	<LOQ
Spiromesifen	30	3000	<LOQ	Spirotetramat	30	3000	<LOQ
Spiroxamine	30	100	<LOQ	Tebuconazole	30	1000	<LOQ
Thiacloprid	30	100	<LOQ	Thiamethoxam	30	1000	<LOQ
Trifloxystrobin	30	3000	<LOQ				

*Xueli Gao*  
Xueli Gao Lab Toxicologist  
Ph.D., DABT

*Aixia Sun*  
Aixia Sun Lab Director/Principal Scientist  
D.H.Sc., M.Sc., B.Sc., MT (AAB)



Definitions and Abbreviations used in this report: \*Total CBD = CBD + (CBD-A \* 0.877), \*Total THC = THCA-A \* 0.877 + Delta 9 THC, \*CBG Total = (CBGA \* 0.877) + CBG, \*CBN Total = (CBNA \* 0.877) + CBN, \*Other Cannabinoids Total = CBC + CBDV + THCV + THCV-A, \*Total Detected Cannabinoids = CBD Total + CBG Total + CBN Total + THC Total + CBC + CBDV + THCV + THCV-A, \*Analyte Details above show the Dry Weight Concentrations unless specified as 12% moisture concentration. (mg/ml) = Milligrams per Milliliter, LOQ = Limit of Quantitation, LOD = Limit of Detection, Dilution = Dilution Factor (ppb) = Parts per Billion, (%) = Percent, (cfu/g) = Colony Forming Unit per Gram (cfu/g) = Colony Forming Unit per Gram, , LOD = Limit of Detection, (µg/g) = Microgram per Gram (ppm) = Parts per Million, (ppm) = (µg/g), (aw) = aw (area ratio) = Area Ratio, (mg/Kg) = Milligram per Kilogram, \*Measurement of Uncertainty = +/- 5%



This report shall not be reproduced, without written approval, from ACS Laboratory. The results of this report relate only to the material or product analyzed. Test results are confidential unless explicitly waived otherwise. Accredited by a third-party accrediting body as a competent testing laboratory pursuant to ISO/IEC 17025 of the International Organization for Standardization.



License No. 800025015  
FL License # CMTL-0003  
CLIA No. 10D1094068

# Certificate of Analysis

Compliance Test

**Heaven Sent Hemp**  
PO Box 555  
Lobelville, TN 37097

Batch # T0421521  
Batch Date: 2021-08-03  
Extracted From: Hemp

Test Reg State: Florida

Order # HEA210804-040005  
Order Date: 2021-08-04  
Sample # AABS573

Sampling Date: 2021-08-06  
Lab Batch Date: 2021-08-06  
Completion Date: 2021-08-11

Initial Gross Weight: 15.410 g

## Residual Solvents - FL (CBD) Passed (GCMS)

Specimen Weight: 14.000 mg

Dilution Factor: 1.000

Analyte	LOQ (ppm)	Action Level (ppm)	Result (ppm)	Analyte	LOQ (ppm)	Action Level (ppm)	Result (ppm)
Acetone	2.08	5000	<LOQ	Benzene	0.02	2	<LOQ
Butanes	2.5	2000	<LOQ	Ethanol	2.78	5000	<LOQ
Ethyl Acetate	1.11	5000	<LOQ	Heptane	1.39	5000	<LOQ
Hexane	1.17	290	<LOQ	Isopropyl alcohol	1.39	500	<LOQ
Methanol	0.69	3000	<LOQ	Pentane	2.08	5000	<LOQ
Propane	5.83	2100	<LOQ	Toluene	2.92	890	<LOQ
Total Xylenes	2.92	2170	<LOQ				

## Listeria Monocytogenes Passed (qPCR)

Specimen Weight: 974.200 mg

Dilution Factor: 1.000

Analyte	Action Level (cfu/g)	Result
Listeria Monocytogenes	1	Absence in 1g

*Xueli Gao*  
Xueli Gao  
Ph.D., DABT  
Lab Toxicologist

*Aixia Sun*  
Aixia Sun  
D.H.Sc., M.Sc., B.Sc., MT (AAB)  
Lab Director/Principal Scientist



Definitions and Abbreviations used in this report: \*Total CBD = CBD + (CBD-A \* 0.877), \*Total THC = THCA-A \* 0.877 + Delta 9 THC, \*CBG Total = (CBGA \* 0.877) + CBG, \*CBN Total = (CBNA \* 0.877) + CBN, \*Other Cannabinoids Total = CBC + CBDV + THCV + THCV-A, \*Total Detected Cannabinoids = CBD Total + CBG Total + CBN Total + THC Total + CBC + CBDV + THCV + THCV-A, \*Analyte Details above show the Dry Weight Concentrations unless specified as 12% moisture concentration. (mg/ml) = Milligrams per Milliliter, LOQ = Limit of Quantitation, LOD = Limit of Detection, Dilution = Dilution Factor (ppb) = Parts per Billion, (%) = Percent, (cfu/g) = Colony Forming Unit per Gram (cfu/g) = Colony Forming Unit per Gram, , LOD = Limit of Detection, (µg/g) = Microgram per Gram (ppm) = Parts per Million, (ppm) = (µg/g), (aw) = aw (area ratio) = Area Ratio, (mg/Kg) = Milligram per Kilogram, \*Measurement of Uncertainty = +/- 5%



This report shall not be reproduced, without written approval, from ACS Laboratory. The results of this report relate only to the material or product analyzed. Test results are confidential unless explicitly waived otherwise. Accredited by a third-party accrediting body as a competent testing laboratory pursuant to ISO/IEC 17025 of the International Organization for Standardization.