

Certificate of Analysis

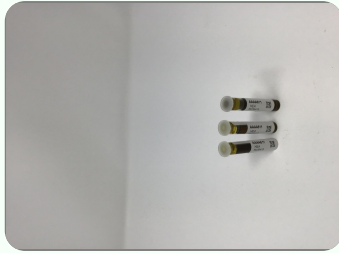
Order #: HEA191227-010145 Order Date: 2019-12-27 Collection Date: 2019-12-27 Report Date: 2020-01-07

Batch #: T0235419_ Chocolate Mint Hemp Ext
Sample #: AAAA811
Specimen Type: CBD/HEMP Derivative Products (Ingestion)
Extracted From: Hemp
Description: Proprietary Extraction Process

Initial Gross Weight: 14649mg
Method: SOP-3



Potency Tested	Residual Solvents Passed	Heavy Metals Passed
Mycotoxins Passed	Flavonoids Tested	Microbiology Petrifilm Tested
Pesticides Passed		

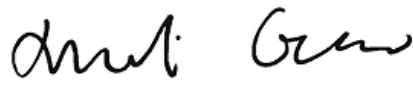



The photos on this report are of a sample collected by the lab and may vary from the final packaging.

CBD Total 2.260%	THC Total 0.098%	CBG Total 0.055%
CBN Total Not Detected	Other Cannabinoids Total 0.075%	Total Detected Cannabinoids 2.488%

Potency - 11 (Tested)								(HPLC)			
Analyte	Result (mg/g)	(%)	LOQ (%)	Analyte	Result (mg/g)	(%)	LOQ (%)	Analyte	Result (mg/g)	(%)	LOQ (%)
CBC	0.749	0.075	0.001	CBD	16.400	1.640	0.001	CBDA	7.070	0.707	0.001
CBDV	<LOQ	0.001		CBG	0.327	0.033	0.001	CBGA	0.257	0.026	0.001
CBN	<LOQ	0.001		Delta-8-THC		<LOQ	0.001	Delta-9-THC	0.978	0.098	0.001
THCA-A	<LOQ	0.001		THCV		<LOQ	0.001	Total CBD	22.600	2.260	0.001
Total THC	0.978	0.098	0.001								

*Total CBD = CBD + (CBD-A * 0.877), *Total THC = THCA-A * 0.877 + Delta 9 THC, *CBG Total = (CBGA * 0.877) + CBG, *CBN Total = (CBNA * 0.877) + CBN, *Other Cannabinoids Total = CBC + CBDV + THC + THCV + THCA-A, *Total Detected Cannabinoids = CBD Total + CBG Total + CBN Total + THC Total + CBC + CBDV + THC + THCV + THCA-A (mg/g) = Milligram per Gram, LOQ = Limit of Quantitation


Xueli Gao Lab Toxicologist
Ph.D., DABT


Aixia Sun Principal Scientist
D.H.Sc., M.Sc., B.Sc., MT (AAB)

This report shall not be reproduced, without written approval, from ACS Laboratory. The results of this report relate only to the material or product analyzed. Test results are confidential unless explicitly waived otherwise. Accredited by a third-party accrediting body as a competent testing laboratory pursuant to ISO/IEC 17025 of the International Organization for Standardization.

Certificate of Analysis

Order #: HEA191227-010145 Order Date: 2019-12-27 Collection Date: 2019-12-27 Report Date: 2020-01-07

Batch #: T0235419_ Chocolate Mint Hemp Ext
Sample #: AAAA811
Specimen Type: CBD/HEMP Derivative Products (Ingestion)
Extracted From: Hemp
Description: Proprietary Extraction Process

Initial Gross Weight: 14649mg
Method: SOP-3



Residual Solvents (Extract Only) (Passed)

(GC/GCMS)

Analyte	Action Level (ppm)	Result (ppm)	LOQ (ppm)	Analyte	Action Level (ppm)	Result (ppm)	LOQ (ppm)	Analyte	Action Level (ppm)	Result (ppm)	LOQ (ppm)
Acetone	5000	<LOQ	87.9	Benzene	1.6	<LOQ	1.6	Chloroform	53	<LOQ	53
Ethanol	5000	Passed	26.7	Hexane	60	<LOQ	36.6	I-Butane	5000	<LOQ	100
Isopropanol	5000	<LOQ	52.3	Methanol	3000	<LOQ	87.9	N-Butane	5000	<LOQ	200
Pentane	5000	<LOQ	389.5	Toluene	890	<LOQ	38.4				

(ppm) = Parts per Million, (ppm) = (µg/g), , LOQ = Limit of Quantitation

Heavy Metals (Passed)

(ICP-MS)

Analyte	Action Level (ppb)	Result (ppb)	LOQ (ppb)	Analyte	Action Level (ppb)	Result (ppb)	LOQ (ppb)	Analyte	Action Level (ppb)	Result (ppb)	LOQ (ppb)
Arsenic (As)	1500	<LOQ	100	Cadmium (Cd)	500	<LOQ	100	Lead (Pb)	500	<LOQ	100
Mercury (Hg)	3000	<LOQ	100								

(ppb) = Parts per Billion, (ppb) = (µg/kg), , LOQ = Limit of Quantitation

Mycotoxins (Passed)

(LCMS/MS)

Analyte	Action Level (ppb)	Result (ppb)	LOQ (ppb)	Analyte	Action Level (ppb)	Result (ppb)	LOQ (ppb)	Analyte	Action Level (ppb)	Result (ppb)	LOQ (ppb)
Aflatoxin B1		<LOQ	6	Aflatoxin B2		<LOQ	6	Aflatoxin G1		<LOQ	6
Aflatoxin G2		<LOQ	6	Aflatoxin Total	20	<LOQ	6	Ochratoxin A	20	<LOQ	12

(ppb) = Parts per Billion, (ppb) = (µg/kg), , LOQ = Limit of Quantitation

Xueli Gao
Ph.D., DABT

Lab Toxicologist

Aixia Sun

D.H.Sc., M.Sc., B.Sc., MT (AAB)

Principal Scientist

This report shall not be reproduced, without written approval, from ACS Laboratory. The results of this report relate only to the material or product analyzed. Test results are confidential unless explicitly waived otherwise. Accredited by a third-party accrediting body as a competent testing laboratory pursuant to ISO/IEC 17025 of the International Organization for Standardization.

721 Cortaro Drive
Sun City Center, FL - 33573

P: +1 (866) 762-8379
F: +1 (813) 634-4538

E: info@acslabcannabis.com
<http://www.acslabcannabis.com>

License No. 800025015
CLIA No. 10D1094068

Certificate of Analysis

Order #: HEA191227-010145 Order Date: 2019-12-27 Collection Date: 2019-12-27 Report Date: 2020-01-07

Batch #: T0235419_ Chocolate Mint Hemp Ext Initial Gross Weight: 14649mg
 Sample #: AAAA811 Method: SOP-3
 Specimen Type: CBD/HEMP Derivative Products (Ingestion)
 Extracted From: Hemp
 Description: Proprietary Extraction Process



Flavonoids (Tested)						(LCMS/MS)		
Analyte	Result (ppm)	LOQ (ppm)	Analyte	Result (ppm)	LOQ (ppm)	Analyte	Result (ppm)	LOQ (ppm)
Apigenin	6.022	4	Baicalin	<LOQ	8	Beta sitosterol	955.200	5
Cannflavin A	48.510	3.91	Cannflavin B	36.750	4.84	Cannflavin C	<LOQ	2.36
Chrysin	<LOQ	2.5	Fisetin	<LOQ	5	Kaempferol	<LOQ	1
Luteolin	<LOQ	2.5	Orientin	<LOQ	5	Quercetin	<LOQ	2.23
Rutin	<LOQ	7.81	Vitexin	<LOQ	4	Wogonin	<LOQ	0.5

(ppm) = Parts per Million, (µg/g) = (µg/g), , LOQ = Limit of Quantitation

Microbiology #5 (Petrifilm/Plating) (Tested)						(Petrifilm)		
Analyte	Result (cfu/g)	LOQ (cfu/g)	Analyte	Result (cfu/g)	LOQ (cfu/g)	Analyte	Result (cfu/g)	LOQ (cfu/g)
Aerobic Bacteria	<100	100	E. Coli / Coliform	<100	100	Yeast/Mold	<100	100

(cfu/g) = Colony Forming Unit per Gram, , LOQ = Limit of Quantitation

Xueli Gao
 Ph.D., DABT

Lab Toxicologist

Aixia Sun
 D.H.Sc., M.Sc., B.Sc., MT (AAB)

Principal Scientist

This report shall not be reproduced, without written approval, from ACS Laboratory. The results of this report relate only to the material or product analyzed. Test results are confidential unless explicitly waived otherwise. Accredited by a third-party accrediting body as a competent testing laboratory pursuant to ISO/IEC 17025 of the International Organization for Standardization.

721 Cortaro Drive
 Sun City Center, FL - 33573

P: +1 (866) 762-8379
 F: +1 (813) 634-4538

E: info@acslabcannabis.com
<http://www.acslabcannabis.com>

License No. 800025015
 CLIA No. 10D1094068

Certificate of Analysis

Order #: HEA191227-010145 Order Date: 2019-12-27 Collection Date: 2019-12-27 Report Date: 2020-01-07

Batch #: T0235419_Chocolate Mint Hemp Ext
Sample #: AAAA811
Specimen Type: CBD/HEMP Derivative Products (Ingestion)
Extracted From: Hemp
Description: Proprietary Extraction Process

Initial Gross Weight: 14649mg
Method: SOP-3



Pesticides (Passed)

(LCMS/MS)

Analyte	Action Level (ppb)	Result (ppb)	LOQ (ppb)	Analyte	Action Level (ppb)	Result (ppb)	LOQ (ppb)	Analyte	Action Level (ppb)	Result (ppb)	LOQ (ppb)
Abamectin	300	<LOQ	28.23	Acephate	3000	<LOQ	30	Acequinocyl	2000	<LOQ	48
Acetamiprid	3000	<LOQ	30	Aldicarb	100	<LOQ	30	Azoxystrobin	3000	Passed	10
Bifenazate	3000	<LOQ	30	Bifenthrin	500	<LOQ	30	Chlorfenapyr	100	<LOQ	48
Chlorpyrifos	100	<LOQ	30	Clofentezine	500	<LOQ	30	Coumaphos	100	<LOQ	30
Cyfluthrin	1000	<LOQ	30	Cypermethrin	1000	<LOQ	30	Daminozide	100	<LOQ	30
DDVP(Dichlorvos)	100	<LOQ	30	Diazinon	200	<LOQ	30	Dimethoate	100	<LOQ	30
Dimethomorph	3000	<LOQ	30	Ethoprop(hos)	100	<LOQ	30	Etofenprox	100	<LOQ	30
Etoxazole	1500	<LOQ	30	Fenhexamid	3000	<LOQ	30	Fenoxycarb	100	<LOQ	30
Fipronil	100	<LOQ	30	Fonicamid	2000	<LOQ	30	Fludioxonil	3000	<LOQ	30
Hexythiazox	2000	<LOQ	30	Imazalil	100	<LOQ	30	Imidacloprid	3000	<LOQ	30
Kresoxim Methyl	1000	<LOQ	30	Malathion A	2000	<LOQ	30	Metalaxyl	3000	<LOQ	10
Methiocarb	100	<LOQ	30	Methomyl	100	<LOQ	30	Mevinphos	100	<LOQ	30
Myclobutanil	3000	<LOQ	30	Naled	500	<LOQ	30	Oxamyl	500	<LOQ	30
Paclobutrazol	100	<LOQ	30	Parathion-methyl	100	<LOQ	48	Pentachloronitrobenzene	200	<LOQ	30
Permethrin	1000	<LOQ	30	Phosmet	200	<LOQ	30	Piperonylbutoxide	3000	<LOQ	30
Prallethrin	400	<LOQ	30	Propiconazole	1000	<LOQ	30	Propoxur	100	<LOQ	30
Pyrethrins	1000	<LOQ	30	Pyridaben	3000	<LOQ	30	Spinetoram	3000	<LOQ	30
Spinosyn A	3000	<LOQ	30	Spinosyn D	3000	<LOQ	30	Spiromesifen	3000	<LOQ	30
Spirotetramat	3000	<LOQ	30	Spiroxamine	100	<LOQ	30	Tebuconazole	1000	<LOQ	30
Thiacloprid	100	<LOQ	30	Thiamethoxam	1000	<LOQ	30	Trifloxystrobin	3000	<LOQ	30

(ppb) = Parts per Billion, (ppb) = (µg/kg), . LOQ = Limit of Quantitation

Xueli Gao
Ph.D., DABT

Lab Toxicologist

Aixia Sun
D.H.Sc., M.Sc., B.Sc., MT (AAB)

Principal Scientist

This report shall not be reproduced, without written approval, from ACS Laboratory. The results of this report relate only to the material or product analyzed. Test results are confidential unless explicitly waived otherwise. Accredited by a third-party accrediting body as a competent testing laboratory pursuant to ISO/IEC 17025 of the International Organization for Standardization.

721 Cortaro Drive
Sun City Center, FL - 33573

P: +1 (866) 762-8379
F: +1 (813) 634-4538

E: info@acslabcannabis.com
http://www.acslabcannabis.com

License No. 800025015
CLIA No. 10D1094068

Certificate of Analysis

Order #: HEA200113-010138 Order Date: 2020-01-13 Collection Date: Report Date: 2020-01-15

Batch #: T0235419-Chocolate Mint Hemp Ext
 Sample #: AAAB193
 Specimen Type: CBD/HEMP Derivative Products
 Extracted From: Hemp
 Description: Proprietary Extraction Process

Initial Gross Weight: 47.8mg
 Method: SOP-3



Terpenes
 Tested

Terpenes - FL (Tested)

Terpenes - FL (Tested)						(GC/GCMS)			
Analyte	Result (mg/g)	LOQ (%)	Analyte	Result (mg/g)	LOQ (%)	Analyte	Result (mg/g)	LOQ (%)	
(+)-Cedrol	<LOQ	0.001	(R)-(+)-Limonene	<LOQ	0.001	3-Carene	<LOQ	0.001	
Alpha-Bisabolol	<LOQ	0.001	alpha-Cedrene	<LOQ	0.001	alpha-Humulene	<LOQ	0.001	
alpha-Phellandrene	<LOQ	0.001	alpha-Pinene	<LOQ	0.001	alpha-Terpinene	<LOQ	0.001	
Borneol	<LOQ	0.001	beta-Myrcene	<LOQ	0.001	beta-Pinene	<LOQ	0.001	
Caryophyllene oxide	<LOQ	0.001	Camphene	<LOQ	0.001	Camphors	<LOQ	0.001	
Fenchyl Alcohol	<LOQ	0.001	cis-Nerolidol	<LOQ	0.001	Eucalyptol	<LOQ	0.001	
Guaial	<LOQ	0.001	Farnesene	<LOQ	0.001	Fenchone	<LOQ	0.001	
Isopulegol	<LOQ	0.001	gamma-Terpinene	<LOQ	0.001	Geraniol	<LOQ	0.001	
Ocimene	<LOQ	0.001	Hexahydrothymol	<LOQ	0.001	Geranyl acetate	<LOQ	0.001	
Sabinene Hydrate	<LOQ	0.001	Linalool	<LOQ	0.001	Isoborneol	<LOQ	0.001	
trans-beta-Ocimene	<LOQ	0.001	Pulegone	<LOQ	0.001	Nerol	<LOQ	0.001	
			Terpineol	<LOQ	0.001	Sabinene	<LOQ	0.001	
			trans-Caryophyllene	0.712	0.071	0.001	Terpinolene	<LOQ	0.001
							trans-Nerolidol	<LOQ	0.001
							Valencene	<LOQ	0.001

(mg/g) = Milligram per Gram, , LOQ = Limit of Quantitation

Xueli Gao
 Ph.D., DABT

Lab Toxicologist

Aixia Sun
 D.H.Sc., M.Sc., B.Sc., MT (AAB)

Principal Scientist

This report shall not be reproduced, without written approval, from ACS Laboratory. The results of this report relate only to the material or product analyzed. Test results are confidential unless explicitly waived otherwise. Accredited by a third-party accrediting body as a competent testing laboratory pursuant to ISO/IEC 17025 of the International Organization for Standardization.

721 Cortaro Drive
 Sun City Center, FL - 33573

P: +1 (866) 762-8379
 F: +1 (813) 634-4538

E: info@acslabcannabis.com
 http://www.acslabcannabis.com

License No. 800025015
 CLIA No. 10D1094068